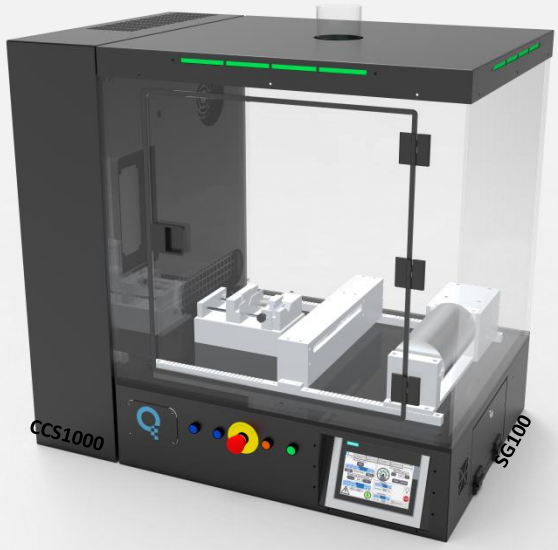


## SPINGENIX SG100 & SG100-CCS1000 ELECTROSPINNING SYSTEMS



**Spingenix SG100** is a fully automated electrospinning system for laboratory research prior to pilot and industrial scale applications. **Spingenix SG100** is controlled by the 7-inch Siemens Comfort Touch Screen Display, which allows the user to precisely control all the features of the electrospinning system. The **Spingenix SG100** has variety of collectors including stationary collectors for nanofiber deposition, high-speed rotating drum collector to produce well-aligned nanofibers, and rotating rod collector to produce tubular nanofibrous membranes. The system is equipped with X-Scanner for uniform fiber collection and has emitter options of single nozzle, core-shell nozzle to produce bicomponent nanofibers and multi-nozzle system for high throughput nanofiber production. **Spingenix SG100** also offers Taylor Cone imaging camera system, UV Sterilization and UV Curing options as well as temperature and humidity climate control unit CSS1000.

### CABIN

<b>Chassis:</b>	Plexiglas & Sheet Metal Cabin
<b>System Weight:</b>	120 Kg
<b>Dimensions:</b>	H x W x D: 970mm X 800mm X 700mm
<b>Exhaust Connection:</b>	100mm Diameter with Manual Shutoff
<b>Switches:</b>	Magnetic Door Switch, Emergency Stop Button, System Main Switch.
<b>Lighting:</b>	LED Internal Lighting, Red/Green LED Status Indicator.

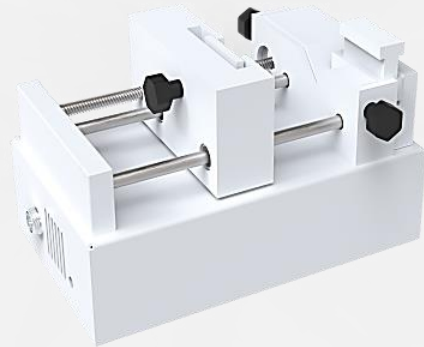
### HIGH VOLTAGE POWER SUPPLY

Main Source: +30kV (options: +40kV, +60kV)  
Second Source (optional): -30kV

### CLIMATE CONTROL SYSTEM – CCS1000

Forced Air Cooling, Heating And (De)humidifying  
**Relative Humidity Setting Range:** 20-50% (at 25°C),  
25%-50% (at 20°C)  
**Temperature Setting Range:** 15-40°C (at 40% Rh)

### SYRINGE PUMP - SPD1



Chemically Inert Teflon (PTFE) Parts  
Metal Pedestal and Housing  
Compatible With 1 – 60 mL Standard Syringes  
Adjustable Speed

- Min Speed: 70  $\mu$ m/hour
- Max Speed: 1.95 mm/sec

Max Linear Force: 28 Lbs.  
W X L X H: 146mm X 237mm X 134mm  
Weight: 5kg

### TOUCH PANEL & ELECTRONICS CONTROL

7-Inch Siemens Comfort Touch Screen Display  
User Friendly Graphical User Interface (GUI)  
Dashboard for Process Monitoring:

- Syringe Pump Speed
- Drum Collector Speed
- Horizontal X-Scanner Speed
- Positive High Voltage Setting
- Negative High Voltage Setting
- Cabin Temperature and Humidity

Recipe Creation and Single Button Run Capability  
Error/Alarm Display  
Menu Tabs for Setting/Reading Components



Touch Panel

### STATIONARY COLLECTORS

Chemically Inert Teflon (PTFE) Base  
Square and Circular Cr/Ni Plated Sheet Metal  
Weight: 0.5-1kg  
Square shaped 6cm, 8cm, 10cm side length  
Disk shaped 6cm, 8cm, 10cm diameter  
Optional customized sizes



### HORIZONTAL X-SCAN - XSD1

Chemically Inert Teflon (PTFE) Finish  
Composites by Dual-Scanner Electrospinning  
Size: 75mm X 486mm X 105mm  
Weight: 2.5kg

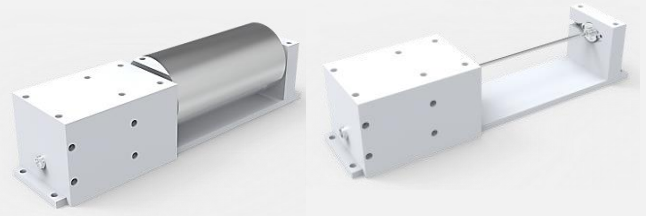


### ROTATING COLLECTOR

Chemically Inert Teflon (PTFE) Finish  
Size: 120mm X 485.2mm X 130mm  
Weight: 4kg (w/Drum), 2.5kg (w/Mandrel)  
Aluminum Drum Diameter: Ø120mm, W 250mm  
Mandrel Collector Diameter: Ø6mm, W 250mm

#### **Drum – DCD120**

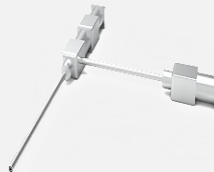
#### **Mandrel – RCD6**



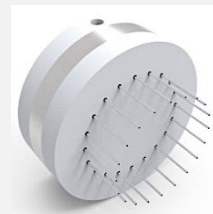
### ACCESSORIES

#### **CO-AXIAL NOZZLE**

Optional customized sizes



#### **MULTI-NOZZLE**



#### **FIBER CURING SYSTEM**

#### **BIO STERILIZATION**

#### **TAYLOR CONE IMAGING CAMERA SYSTEM**

#### **SHELF SYSTEM**

